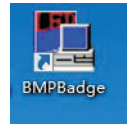
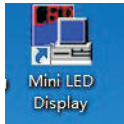
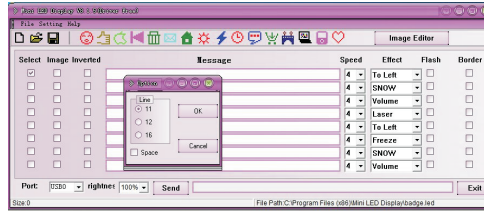


## Instruction for LED name badge

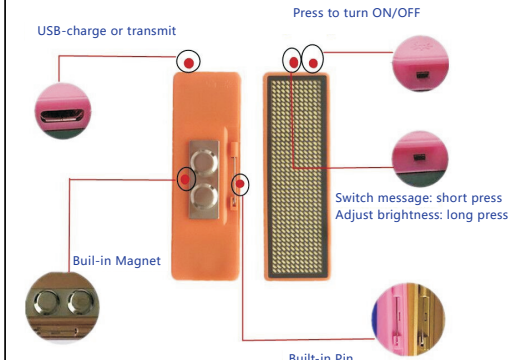
- Put the CD into computer CDROM. ( You can download the software through this link:  
<https://www.lesun-led.com/software/led-badge-9.18-english-version.rar>)
- Run the file "install.exe"
- Select one of "Easy/ Professional/Help"
- There will be 2 icons on desktop:
  - Mini LED Display—Easy Program  
It supports Chinese/English / Korean / Japanese.  
Message font and size is automatic
  - BMP Badge—Professional Program  
It supports Global Language editing. (Software support Chinese/English/Korean /Japanese)  
Users can manually edit message font, size, image, animation, etc.



- Run the Easy Program (Mini LED Display)  
Settings—Language—Select English/Spanish/Japanese/Korean/Chinese  
Settings—Options—Tick 11 for Model# S1144, NB1144, GD1144, LG1144, S1155, NB1155, W1155, Tick 12 for Model# S1248, NB1248, GD1248,
- Use USB cable connect badge to computer.  
Drop-down left bottom "Port" window—select "USBO" (Usually it automatically USB O)
- Edit and send message  
Input 1-8 messages as per your demand  
Select display speed—level 1 lowest to level 8 fastest  
Select display effect—Freeze, Scroll, Laser, Snow, Animation, etc.  
Select the message you want to display, click "Send"



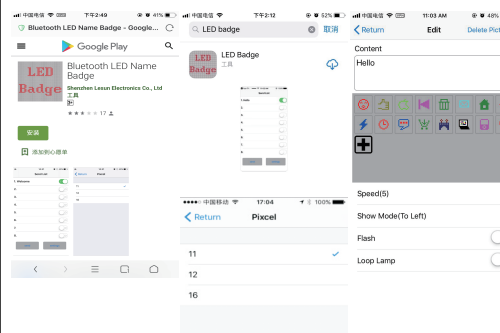
- LED Badge display the message  
M1-8 is circular display all selected messages  
Press message key is fixed display current message.
- If need more function, use Professional Program to edit message manually.



Model: S1144, NB1144, S1248, NB1248, NB1155, W1155, S1155

## Instruction for Bluetooth Led Badge

- Turn on Cellphone Bluetooth Function
- Scan the QR Code and install App or search "LED Badge" in App Store; or search "Bluetooth LED Name Badge" in Google Play
- Run App

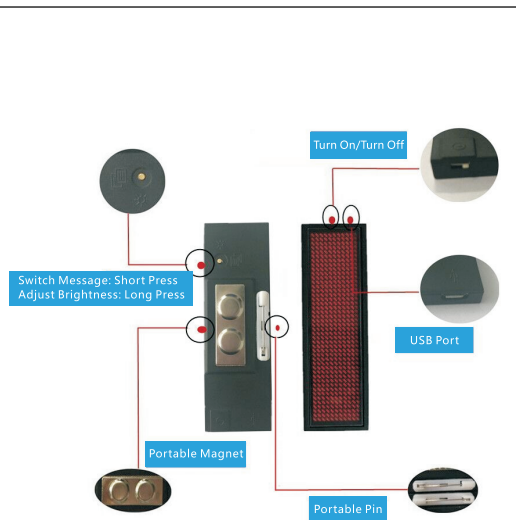


- Settings: Tick "11" for NB1144, NB1155, LB1144; Tick "12" for NB1248
- Click the message and edit
- Turn on the bluetooth on badge: Turn on the badge, then press the On/Off button again, then bluetooth icon comes out (picture 1) (Automatic pairing, no need to choose)



Picture 1

- Send the message
- LED Badge show the message



Model: GD1144, GD1248, GD1133